

TE-30M

TRUSS TOWER 750 KG / 7 M
ELECTRIC HOIST



DATA SHEET

Truss-Tower with square 30x30cm section and steel lifting carriage electrically operated via hoist. Cushioned by the vertical tower structure it moves via nylon pulleys.

The Tower body is 6082-T6 aluminium and is constructed with tubular sections, 50mm external diameter for the lifting sections and 16mm exterior diameter for triangular bars.

The Towerlift is set on a solid steel base with twisting wheels for the transport and 4 stabiliser legs adjustable depending on work surface.

TECHNICAL SPECIFICATIONS

MAXIMUM HEIGHT	7 m.
MAXIMUM LOAD	750 Kg
BASE DIMENSIONS	2,8 X 2,8 m.
FOLDED HEIGHT	1,80 m.
TRANSPORT WEIGHT	73 Kg

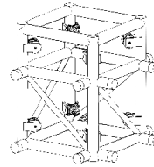
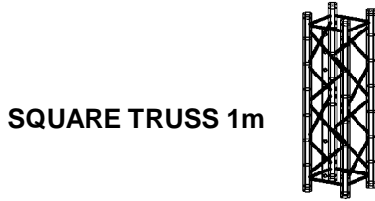


The hoist is not included.

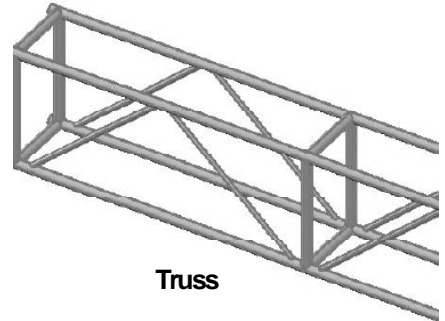


Truss-Tower TE-30M includes:

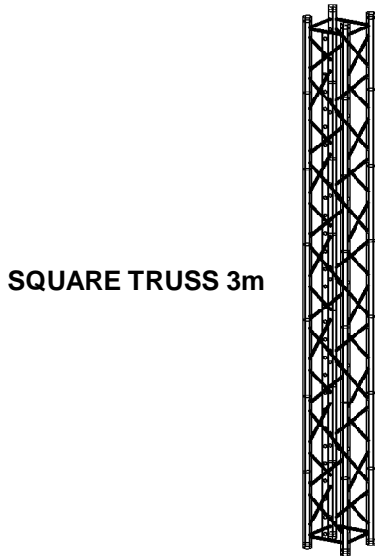
- 1 x base
- 4 x outriggers
- 2 x truss 1m
- 1 x truss 2m
- 1 x truss 3m
- 1 x top with pulley
- 1 x sleeveblock



3 WAY
SLEEVE BLOCK



Truss

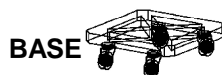
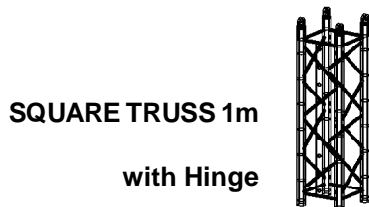
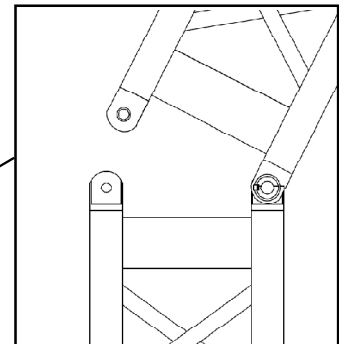
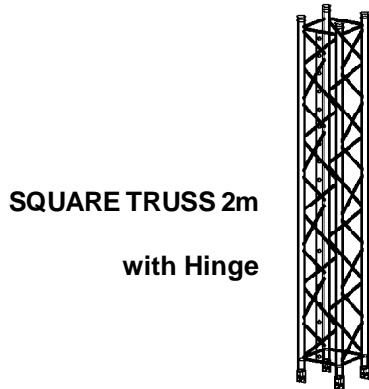


Hoist (Not included)

TE-30M can be used with the following Truss:

Square 30x30 cm
Square 40x40 cm
Square 52x52 cm

VMB truss TR-C30
VMB truss TR-C40
VMB truss TR-P52



OUTRIGGER

