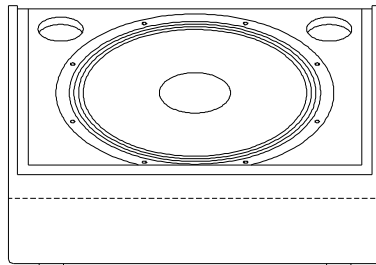
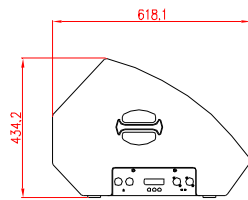


# ADP-15M

## USER MANUAL

V.10.07



**VMB Española S.A.**

Valencia, Spain - [www.vmb.es](http://www.vmb.es) - [contact@vmb.es](mailto:contact@vmb.es)

- ▶ **Class D Powered (bi-amplified)**
- ▶ **Integrated Digital Processing**
- ▶ **Internal temperature control**
- ▶ **Electronic protection**
- ▶ **High quality components**
- ▶ **Online monitoring available**



## ADP-15M stage monitor



### Manufacturer



VMB Española S.A.  
Calle 2 - Pol. Ind. Picassent  
E-46220 Picassent



**CB SCHEME, IEC SYSTEM FOR CONFORMITY TESTING AND CERTIFICATION  
OF ELECTRICAL EQUIPMENT**



**CE CERTIFICATION, EUROPEAN PRODUCT**

**CONTENTS**

- SAFETY PRECAUTIONS	5
<b>- CABINET INTRO</b>	
SPECIFICATIONS	6
BACK PANEL	7
CONNECTORS AND CONNECTIONS	7
<b>- CONFIGURING THE CABINET DSP OPTIONS</b>	
CONFIGURATION PANEL	9
SELECT AND RUN PRESET	10
ONLINE MONITORING SYSTEM	11
CONFIGURING ETHERNET	12
- GUARANTEE	18

Before starting to use this device, please read this instruction manual carefully.  
Keep these instructions in the place where the equipment will be used and with easy access to them.

**- Electrical appliance.**



The exclamation mark within a triangle identifies the presence of electricity. Use the system carefully without wet hands or feet. Avoid installing the speaker in wet or excessively humid places. Do not place material that contains liquid on or near the unit. Avoid dripping or splashing water or any liquid over the unit. Regularly check the condition of the cables and make sure these are not being walked on or pinched. Connect the speaker to bipolar, earthed mains. The mains plug must be connected to the appropriate protection (fuse or breaker). Connection to any other type of mains could result in an electrical shock and violate local electrical codes. **CAUTION: DO NOT CONNECT OR DISCONNECT THE AC POWER CONNECTORS UNDER LOAD.**

**- Heavy equipment.**



Apply back protection when using the system. Avoid loading and unloading at heights.

**- Electrical shock risk.**



The diagonal mark within a triangle identifies the presence of dangerous voltage.

Do not open or handle the interior of the box. These parts are not to be adjusted by the user. For maintenance and/or repair please go to an authorized service centre.

In order to reduce the risk of electric shock, disconnect from AC before plug in or unplugging Audio signal cables. Reconnect to AC only if all signal connections are made and secured.

Never manipulate the ground type plug provided.

The AC mains plugs should always remain accessible for operation.

Unplug the loudspeaker during storms or when it's being used for a long time.

**- Hearing damage risk.**



These systems can reproduce large quantities of sound pressure which can damage hearing. Take precautions if you are going to be near them for extended amounts of time and do not get too close.

**- Hanging – Flying.**



Do not hang the cabinets from the handles or from any other part other than the designated hanging point. When flying this system please observe the technical and “Lynx On Stage” software data carefully. Never exceed the maximum safe working loads or ignore the instructions included within this manual. Use Only flying accessories provided by VMB.

Rigging must be always carried out by professionals.

**- Delicate Material.**



Please ensure no foreign object or water enters the speaker. Only clean the unit with dry cloths. Do not use solvents.

**-Overheating – Fire risk.**



To reduce the risk of the speaker over heating, avoid direct contact with sunlight. Avoid placing the unit close to heat inducing objects such as radiators. Do not cover the equipment in use and do not block any ventilation openings. Do not put naked flame, such as lighted candles, close or on top of the unit.

**- Electromagnetic and intereferente emissions.**

Avoid placing objects which through electromagnetic waves can damage the unit, such as mobile phones, lap tops, magnetic strip cards etc.

This system complies with normatives

EN 55103-1 (1)

EN 55103-2 (2)

(1) This device may not cause harmful interferences.

(2) This device may receive interference including interferences that may cause undesired working.

**-IMPORTANT NOTE.**



This Equipment must be used in accordance with these instructions and by trained professional personnel only.

This equipment should not be used in places with extreme tropical climates. Don't expose this apparatus to extreme humidity and or temperature values.

## INTRODUCTION

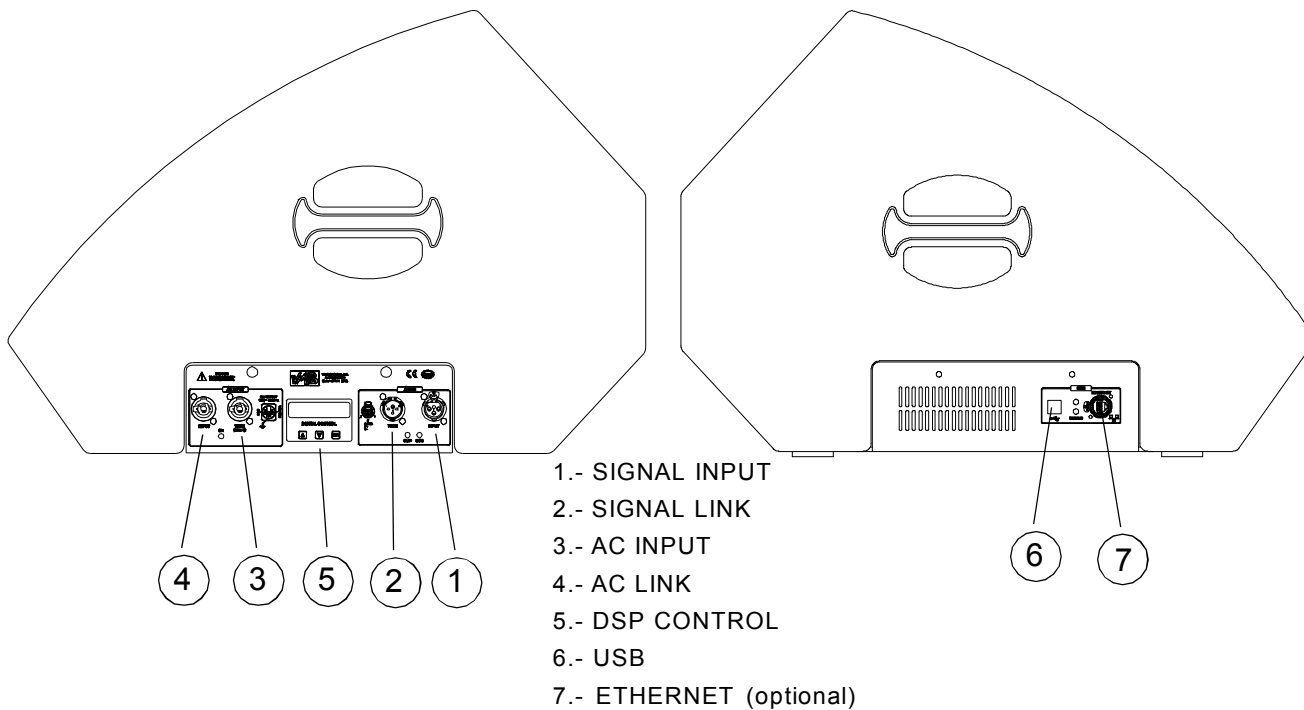
To facilitate, correct and reliable use of the stage monitor ADP-15M we have designed this instruction manual. Please read the manual carefully before proceeding to install the system.

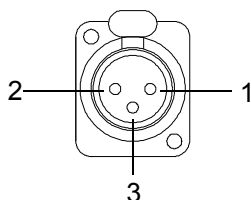
Please observe the technical data carefully and do not ignore the instructions included within this manual.

### SPECIFICATIONS:

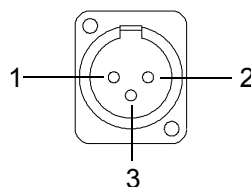
FREQUENCY RANGE	60Hz -20KHz
FREQUENCY RESPONSE	70Hz- 18KHz ± 3dB
HORIZONTAL COVERAGE	90°
VERTICAL COVERAGE	90°
MAX SPL	130 dB/ 133dB peak 1w@ 1m
CROSSOVER	1500 Hz
<hr/>	
TRANSDUCERS	LF/MF: 15" Coaxial Custom Neod.+Nomex Cone HF: 1.4" Neodimium driver + Titanium diaphragm
SHAPE	Trapezoidal
POWER AMPLIFIER	1500W Class D with Switching Power supply 1000W Low/Mid + 500W High
DSP	Internal VMB digital processor DSPB-22®
CABINET ADJUSTMENT	Back panel LCD screen
INTERNAL CONTROLS	Temperature sensor / Fan Speed control
SIGNAL CONNECTION	NEUTRIK connectors XLR Male Input XLR Female Loop Thru
CONTROL CONNECTIONS	USB (DSP programming), ETHERNET* (Online Monitoring System OMS®)
AC POWER	230v / 115v selectable. 50/60 Hz 5A
AC CONNECTIONS	16A NEUTRIK POWERCON with Looping Output
CONSTRUCTION	15 mm Premium Birch plywood
FINISH	High resistant water-based black paint
FRONT DESIGN	Black antirust steel grille
<hr/>	
DIMENSIONS (H x W x D)	434 x 620 x 618 mm
WEIGHT	26 Kg (57 lbs)

\* Ethernet connection is optional.

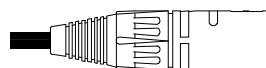
**ADP-15M BACK PANEL.-**

**CONNECTORS AND CONNECTIONS**

**XLR SOCKET CONNECTORS**


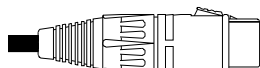
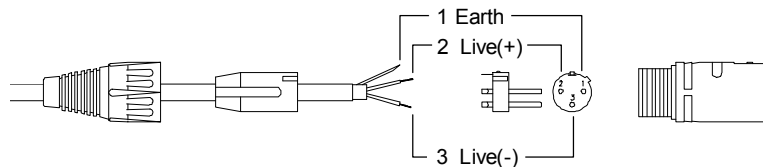
**INPUTS**  
 1.- EARTH  
 2.- LIVE (+)  
 3.- LIVE (-)



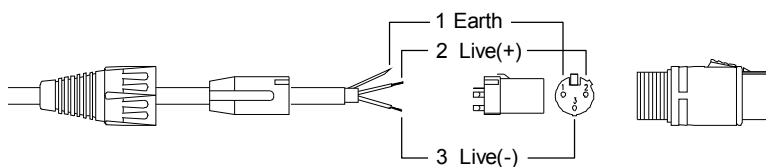
**OUTPUTS**  
 1.- EARTH  
 2.- LIVE (+)  
 3.- LIVE (-)

**XLR AERIAL CONNECTORS**


**Connect to input**

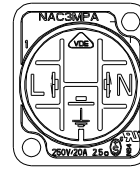
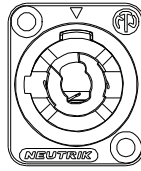


**Connect to output**

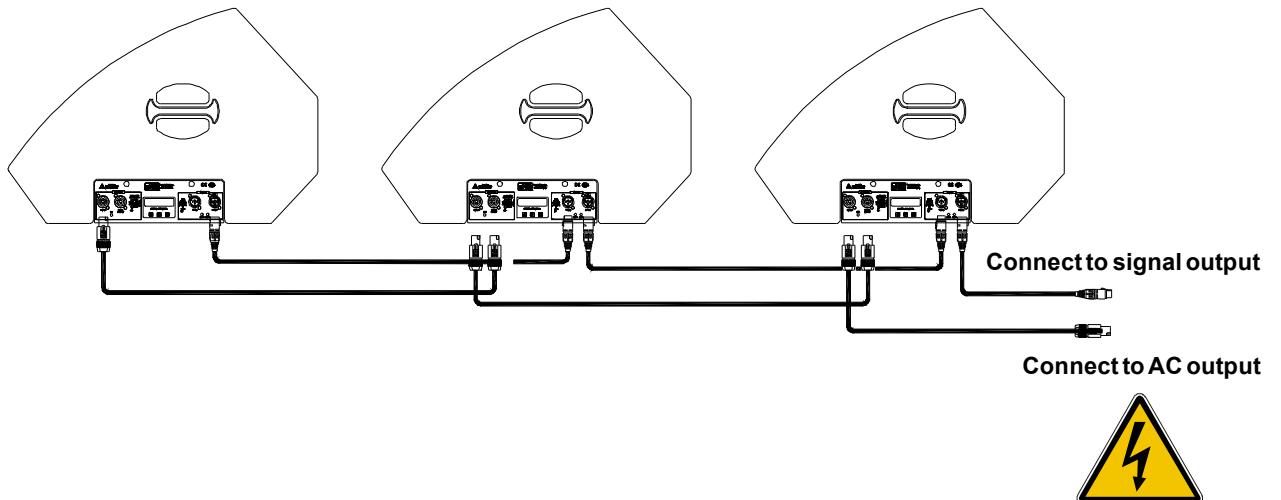


**SOCKET POWERCON CONNECTORS**


**CAUTION: Do not connect or disconnect the AC Power connectors under load.**



L - Line  
N - Neutral  
⏏ - Earth

**CONNECTION EXAMPLE: 3 ADP-15M CABINETS**


## CONFIGURING THE CABINET DSP OPTIONS

From the buttons below the display on the cabinet's back panel you are able to configure the Basic adjustment functions of the internal DSP. Depending on the model, you can find the following configurations:

Preset Number	Display Name	Additional Info
PRESET 01 →	FullRange	Factory preset. Flat response.
PRESET 02 →	LPF 16KHz	16KHz LowPass (ButtW 24 dB/Oct)
PRESET 03 →	LPF 17KHz	17KHz LowPass (ButtW 24 dB/Oct)
PRESET 04 →	HPF 60Hz	60Hz HighPass (Linkwitz Riley 24 dB/Oct)
PRESET 05 →	HP60Hz LP16KHz	60Hz HighPass (Linkwitz Riley 24 dB/Oct) 16KHz LowPass (ButtW 24 dB/Oct)
PRESET 06 →	HP60Hz LP17KHz	60Hz HighPass (Linkwitz Riley 24 dB/Oct) 17KHz LowPass (ButtW 24 dB/Oct)
PRESET 07 →	HP 80Hz	80Hz HighPass (Linkwitz Riley 24 dB/Oct)
PRESET 08 →	HP80Hz LP16KHz	80Hz HighPass (Linkwitz Riley 24 dB/Oct) 16KHz LowPass (ButtW 24 dB/Oct)
PRESET 09 →	HP80Hz LP17KHz	80Hz HighPass (Linkwitz Riley 24 dB/Oct) 17KHz LowPass (ButtW 24 dB/Oct)
PRESET 10 →	HP 100Hz	100Hz HighPass (Linkwitz Riley 24 dB/Oct)
PRESET 11 →	HP100HzLP16KHz	100Hz HighPass (Linkwitz Riley 24 dB/Oct) 16KHz LowPass (ButtW 24 dB/Oct)
PRESET 12 →	HP100HzLP17KHz	100Hz HighPass (Linkwitz Riley 24 dB/Oct) 17KHz LowPass (ButtW 24 dB/Oct)
PRESET 13 →	FullRange	Factory preset. Flat response.

**Note:**

You must apply the desired configuration in each one cabinet. This is done via the buttons located on the back panel of the cabinet and requires electrical power to work.

### CONFIGURATION PANEL

On the back panel you will see 3 buttons and an information screen, on which you can read the established parameters and information such as amplification module temperature, input signal level and name of the current preset (Fig1). If changes are not made the display will automatically dim to save energy and avoid unnecessary light in situations where light is not wanted. To re-activate the light simply press the OK button.



Fig 1

### SELECT AND RUN PRESET

To change the preset configuration just press the up button (Fig2(1)) and down button (Fig2(2)) until you see the title and present number required. Once found, press OK (Fig2(3)) until the progress bar finishes (Fig3). The display will indicate “Loading DSP” (Fig4)



Fig 2

1  
2  
3

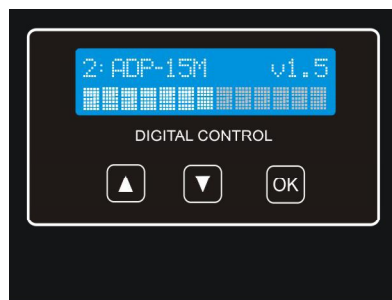


Fig 3

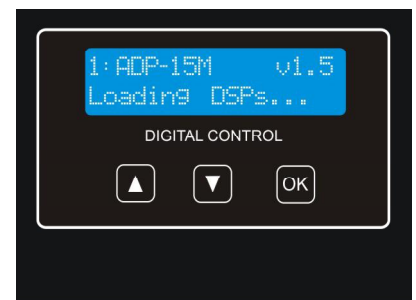


Fig 4

Note:

In case of a power cut, the DSP will save its last configuration when restarted.

## ONLINE MONITORING SYSTEM

### Who is it for?

Users of Self powered DSP incorporated Lynx Line Array and ADP Series Cabinets where the user has requested the cabinets be supplied with the Ethernet Module kit.

### What is it for?

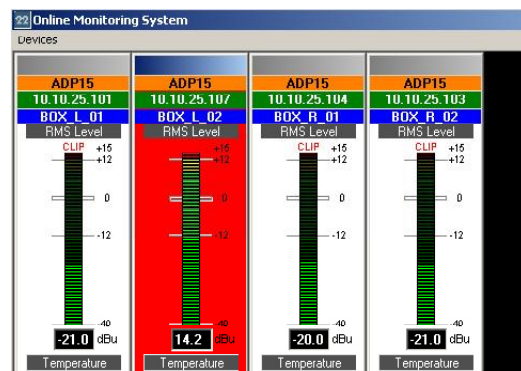
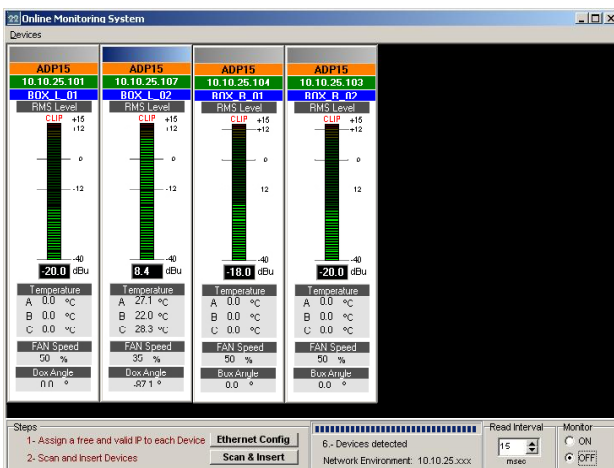
Obtain detailed information of cabinet behaviour and monitor the cabinet/s in Real time.

### How does it work?

Via Ethernet (cable or wireless). Once installed, the O.M.S. software automatically detects all the cabinets connected to the network and displays them in the O.M.S. window on the users PC.

### What does it show?

As well as displaying the cabinet model and IP address the O.M.S will be monitoring in real time and the user will be able to view RMS levels, Input clip, power module temperature and the fan speed. For Lynx Line Arrays it also displays the cabinet angulation.



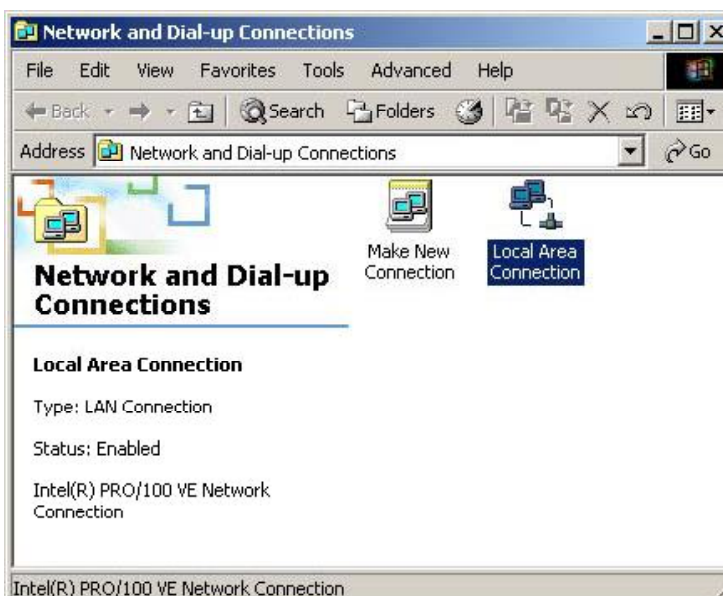
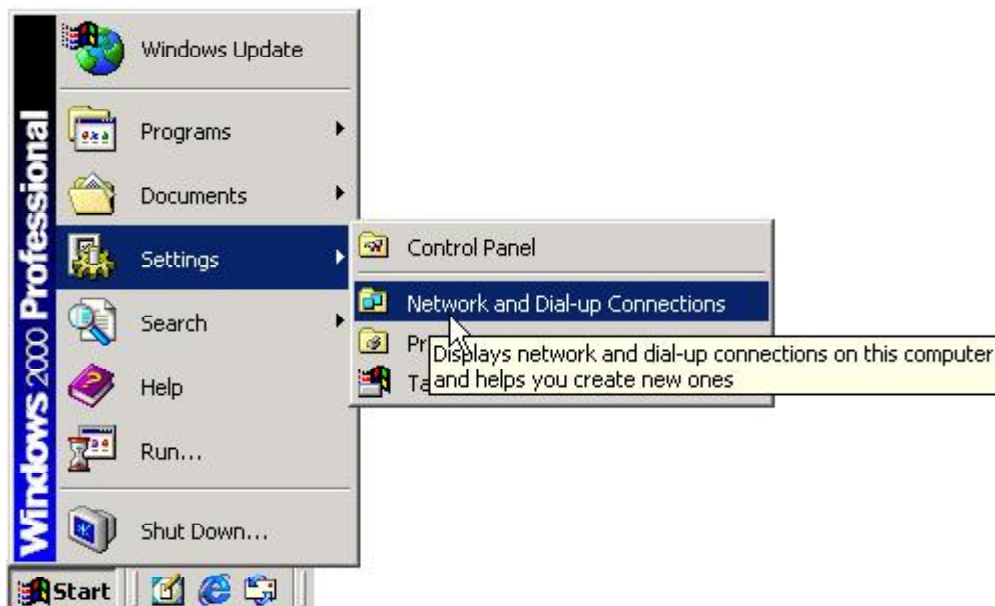
## CONFIGURING ETHERNET TO WORK WITH THE ADP-15M

There are two possible ways to connect:

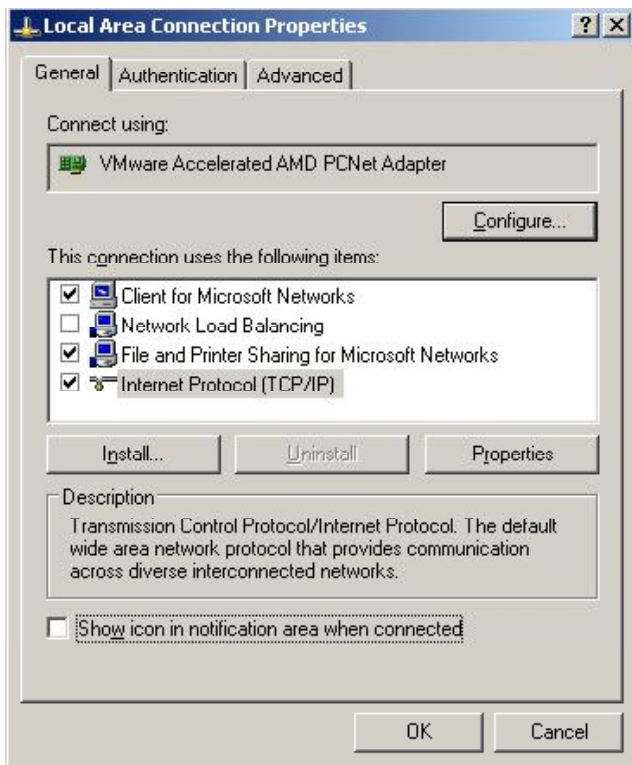
- 1.- Connecting through an ETHERNET SWITCH/HUB::  
- You will need a normal CAT5 Cable.
- 2.- Connecting through a Wirless ETHERNET.

Let us now proceed to configure the Ethernet network, setting the IP address of the computer as static. To do this go to:

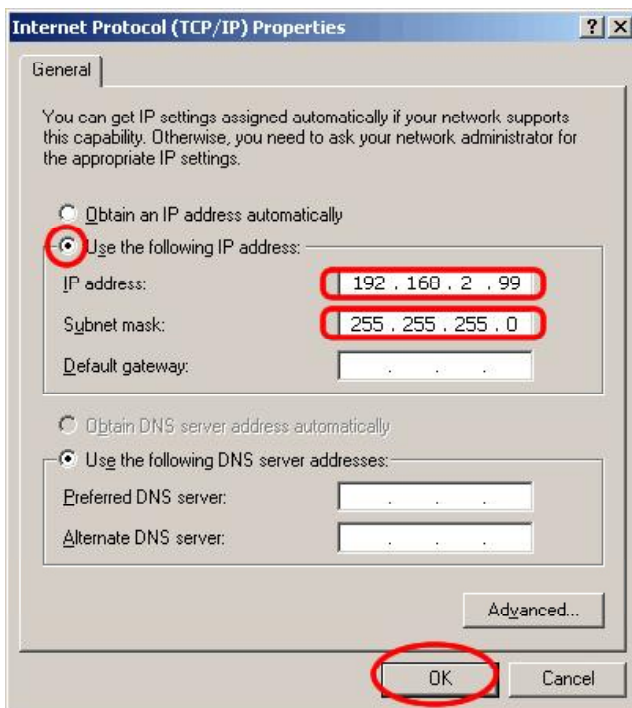
### START > CONFIGURATION > NETWORK CONFIGURATION



We will launch the properties of "Local Area Connection" by clicking the right mouse button and clicking on properties.



Select "Internet Protocol (TCP / IP)" and click on properties.



Select: "Use next IP Address" And write as you wish, in order to configure your network.

Normally, Ip values will be something like this:

*IP Address: 192.168.2.xxx*  
*Subnet Mask: 255.255.255.0*

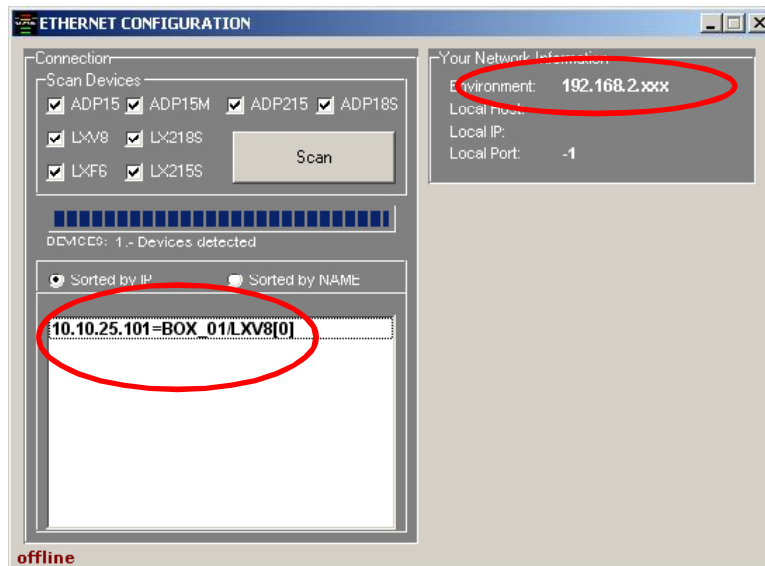
Where xxx will be a number between 1 and 254

Accept to quit the network settings and again to apply them at the next screen. Depending on the Windows Version, you will be asked to reboot or not.

Once the Computer is configured with a static IP proceed to connect to the line array system through the O.M.S. (online monitoring system) software.

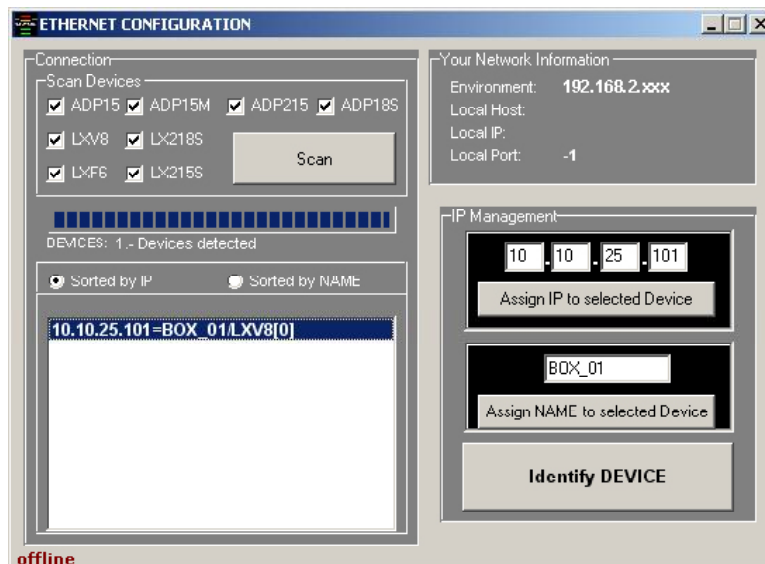
Open the O.M.S Software and from the Initial Screen choose ETHERNET.

It will open a different screen, as follows, there you can see your Network configuration, and the cabinets currently connected.



In this case, we can see that the cabinet do not have the same IP environment as the PC. So, select the cabinet and modify the assigned IP in order to be able to connect to it.

**By default, the Cabinet will have this IP 192.168.2.100** (Versions before 2009 could be assigned with IP 10.10.25.101 or IP 192.168.1.100)



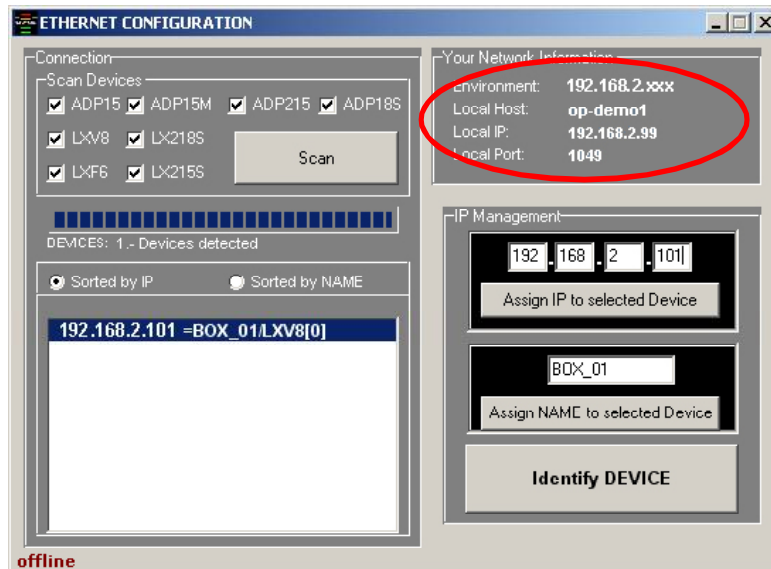
The Network environment consists in the first 3 sets of three numbers separated by dots. In order to detect/communicate with the cabinets, the software and the cabinets **must have the same Network settings**.

If it is not in the same environment Windows Profesional (2000, XP, VISTA) will detect it, but is not going to be able to establish connection. In Windows Home, the processor is not going to be detected until the same environment is applied.

In order to **change the IP** settings to have the same configuration as the PC, we can change the IP address of the cabinets by clicking in the *Assign IP to select Device* button after writing in the box above the desired data. Remember there cannot be two devices with exactly the same IP address, the last set of three numbers has to be different and unique to each one of the devices.

for example, write 192.168.2.101 and click "**Assign IP to select Device**" button.

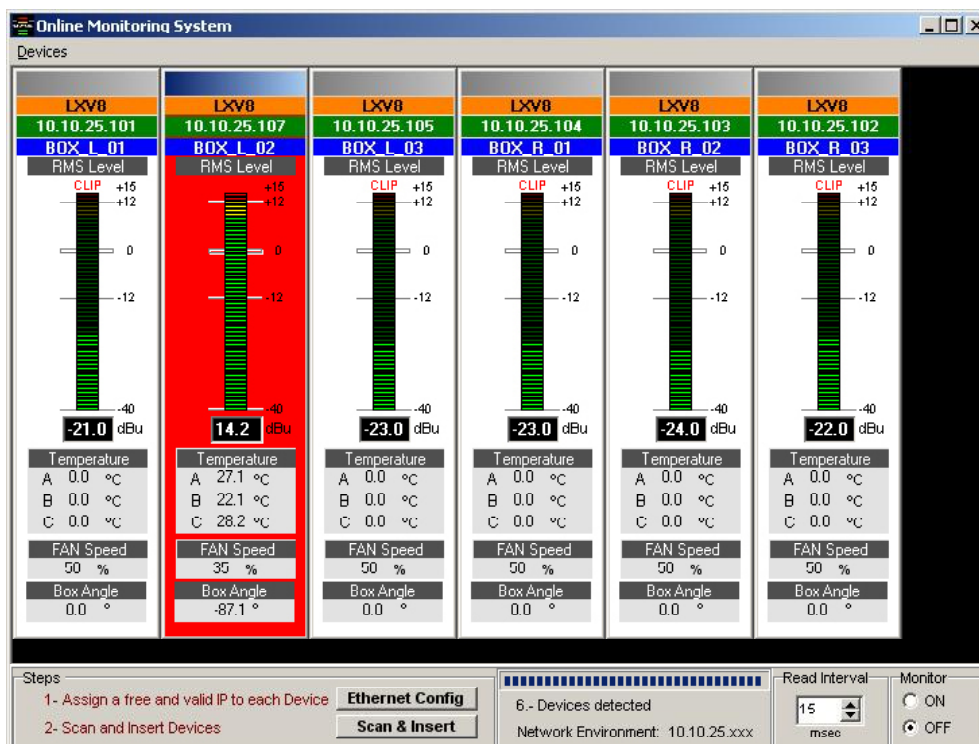
The OMS software will send the new IP to the cabinet and it will scan the network again showing the same information as before, plus more information such as Pc name, IP address and Port in which the communication is established.



When we have a lot of cabinets connected in the network we can use the button "**Identify Device**" to see which box is selected (two activity LEDs will blink for one second). With that information then we can "**Change NAME**" assigned to this Cabinet by clicking in the "**Assign NAME to select Device**" button after writing in the box above the desired Name.

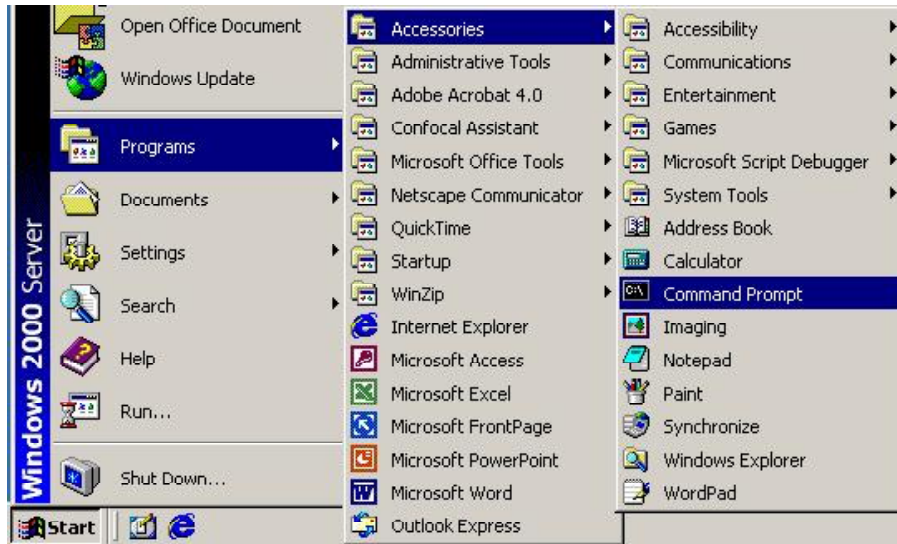
We can sort all the detected cabinets by Name or IP Address.

Returning to the main screen, we can see each cabinet showing: Model, IP address and Name, as well as monitoring: RMS Level, Input Clip, Cabinet angulation, amplifier temperature and fan speed.



If you need to know the PC Network settings go to:

**START > ALL PROGRAMS > ACCESSORIES > Command Prompt**



It will open the cmd.exe from where you can type the IPCONFIG command ( ipconfig + Enter), which will show your actual IP settings.



Here we can see that this PC has IP set as 192.168.2.99.

You can also use the command prompt to know if an IP is already in use by another device. In this case type "ping IP" (ping 192.168.2.xxx) and press enter. If there is no device with this IP you will see the following information:

```

C:\WINDOWS\system32\cmd.exe
C:\Documents and Settings\Sala>ping 192.168.2.101

Pinging 192.168.2.101 with 32 bytes of data:

Request timed out.
Request timed out.
Request timed out.
Request timed out.

Ping statistics for 192.168.2.101:
    Packets: Sent = 4, Received = 0, Lost = 4 (100% loss),

C:\Documents and Settings\Sala>_
  
```

If the IP is in use, the device will respond to the Ping, and we will obtain this information:

```

C:\WINDOWS\system32\cmd.exe
C:\Documents and Settings\Sala>ping 192.168.2.101

Pinging 192.168.2.101 with 32 bytes of data:

Reply from 192.168.2.101: bytes=32 time=5ms TTL=64
Reply from 192.168.2.101: bytes=32 time<1ms TTL=64
Reply from 192.168.2.101: bytes=32 time<1ms TTL=64
Reply from 192.168.2.101: bytes=32 time<1ms TTL=64

Ping statistics for 192.168.2.101:
    Packets: Sent = 4, Received = 4, Lost = 0 (0% loss),
    Approximate round trip times in milli-seconds:
        Minimum = 0ms, Maximum = 5ms, Average = 1ms

C:\Documents and Settings\Sala>_
  
```

You now have the Cabinets working in the ETHERNET Network Enviroment.

**VMB GUARANTEE**

VMB's products are guaranteed against every kind of manufacturing fault 2 year after the date of sale. When products are under guarantee, the repairing and the free supplying of the device parts in order to correct any kind of defect are guaranteed by VMB. In the case that the product could not be returned to the factory for checking and repairing, VMB would supply all the necessary parts.

VMB is not responsible for any damage or defect caused during the transport or caused by an undue or improper handling y a non-authorized person during the life of this guarantee.

All our products undergo rigorous tests and quality controls. We guarantee the characteristics described here within and their quality against any fabrication defect.

The user loses all warranty rights if he incorporates or carries out any modification to the product, if he uses it outside of the stated safe working loads or does not secure the system properly using all the pins in their corresponding holes.

For any question regarding the product, the user must quote the model and serial number.



**VMB ESPAÑOLA S.A.**

Pol. Ind. Picassent - Calle 2, final - 46220 Picassent (VALENCIA) Spain

Tel.: +34 902 34 10 34 - Fax: +34 961 22 11 77

Web:[www.vmb.es](http://www.vmb.es) - E-mail: [contact@vmb.es](mailto:contact@vmb.es)